

Get connected to your
productivity with

Silkron™ Data Adaptor

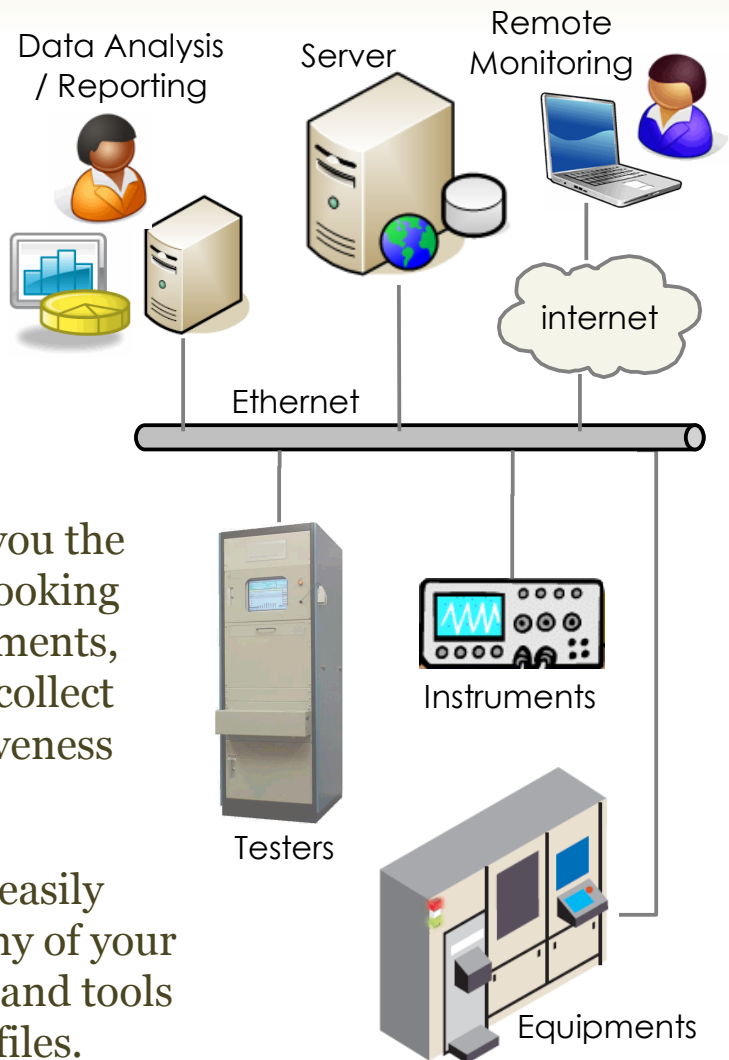
You have variety of testers, equipments, instruments and tools running round the clock on your test or production floor. They generate huge amount of valuable test data and results which are meaningful and useful for process control, quality monitoring as well as traceability.

Silkron™ Data Adaptor provides you the connectivity that you have been looking for, to link to your existing equipments, testers, instruments and tools to collect data seamlessly with cost-effectiveness and reliability.

Silkron™ Data Adaptor helps you easily collect useful information from any of your testers, equipments, instruments and tools that generate data logs or output files.

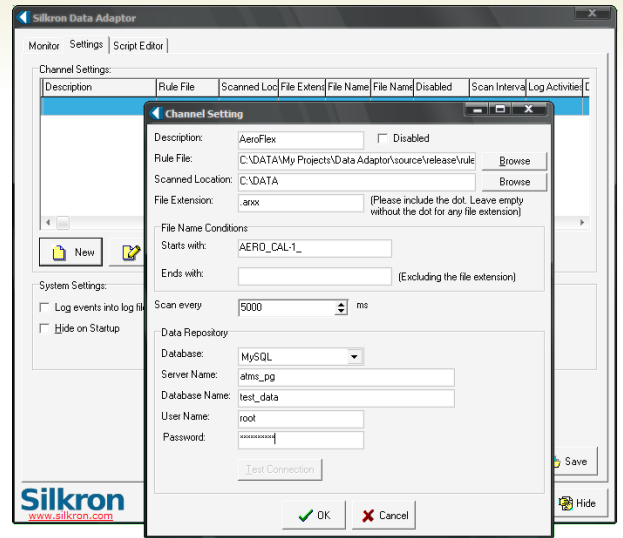
Incorporated with a built-in scripting engine, it allows the users to write their own parsing rules easily and quickly in either Basic, C++ or Pascal programming language in order to integrate to new data log or output file formats.

All information and data collected will be pushed into data repository to be further used for statistical and analytical purposes.

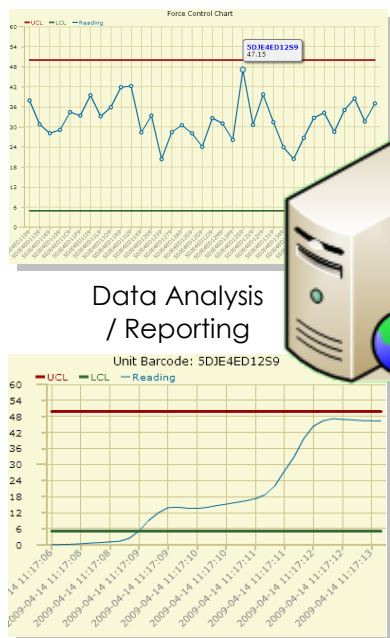


HIGHLIGHTS

- ✓ Works with any testers, equipments, instruments or tools that generate data logs or output files.
- ✓ Built-in scripting engine for parsing rules that can be written in Basic, C++ or Pascal programming languages.
- ✓ Supports generic relational database such as MySQL, Firebirds and so on for data repository
- ✓ Easy setup, configuration and maintenance.
- ✓ Save time and cost in equipment integration and connectivity.
- ✓ Real-time data collection



APPLICATION EXAMPLE



Data Analysis / Reporting

